



J. HARVEST & FROST
CORPORATE SHIRTMAKER



PASSION



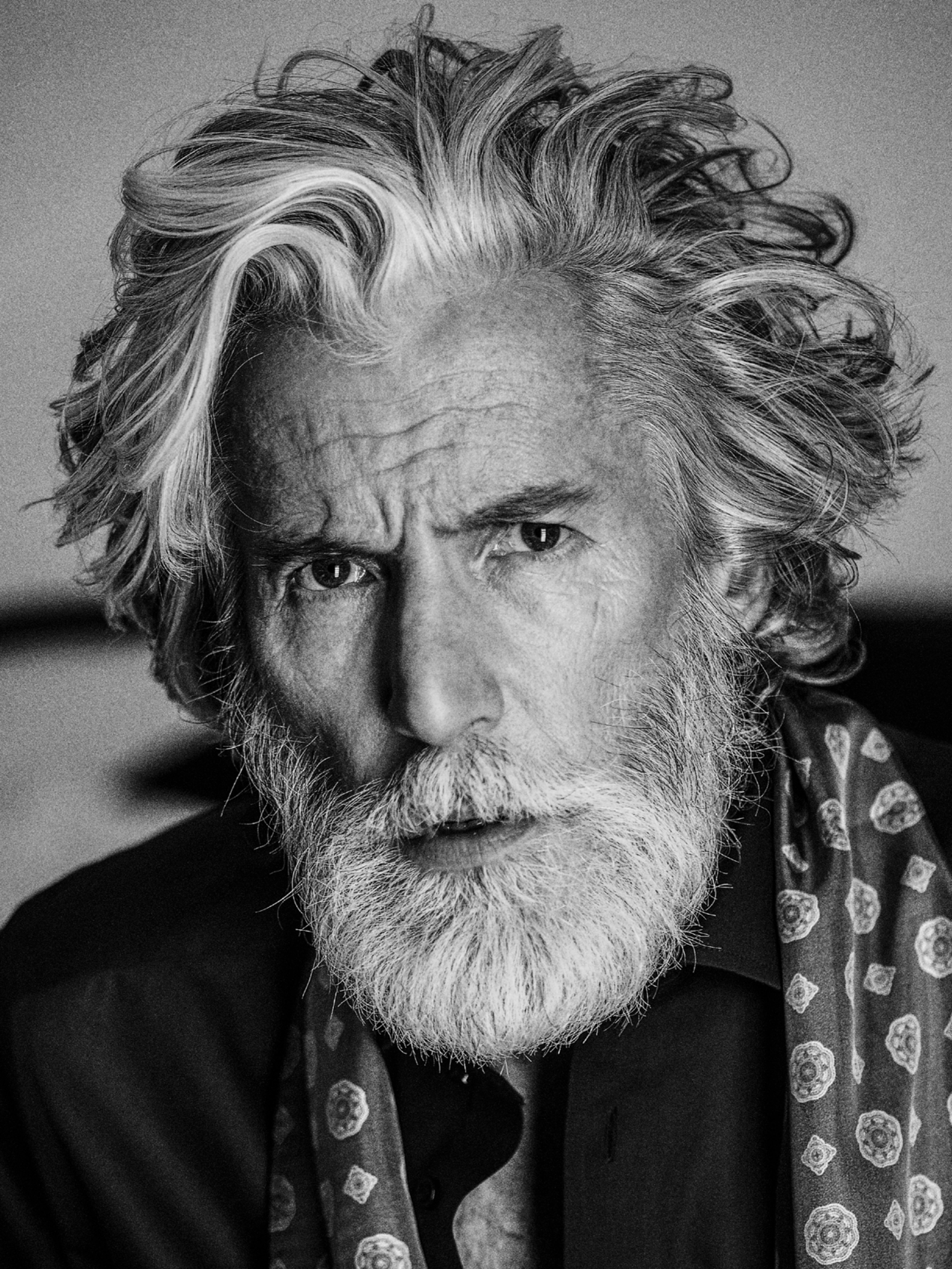
DEDICATION



HARD WORK



CURIOSITY



J.HARVEST & FROST

J.HARVEST & FROST is all about fine workwear. We create the clothing to take you from the office to the dinner party in the same day – making you look and feel at your best.

We are constantly seeking new performances and reinventions. Our dedication and passion result in high quality fabrics, perfect cut and the luxurious feeling you will experience when wearing a piece of our collection.

THE J.HARVEST & FROST CONCEPT DIVISIONS

BLACK BOW – our top of the line collection. Full featured, true classic shirts with state of the art Nano treatment against spills, prepressed sleeves and Never Iron treatment.

GREEN BOW – our classic collection. Here you find our single color products. Timeless classics that will never go out of style.

RED BOW – our classic collection with a twist. Our well-worked shirts with contrast details to suit different situations.

PURPLE BOW – our trend collection. Here you find our latest, most fashionable products. This collection is always changing to meet the needs for fashion today and tomorrow.

INDIGO BOW – Our indigo bow line is all about washed and worn. It is the worker's shirt that is already worked in. Enjoy our Tribute to Leisure.

YELLOW BOW – Yellow bow is our roll-up-your-sleeves-and-get-to-work shirts. Solid colored classical shirts with modern tailored details. Enjoy our Tribute to hard work.

In our mission to make you look and feel sharp and smart; we also offer high end blazers, coats and accessories. J.Harvest & Frost at your service.

MAKING THE FINER WEAR WORK

WWW.JHARVESTANDFROST.COM





BLACK BOW	11
GREEN BOW	16
RED BOW	18
PURPLE BOW	30
INDIGO BOW	36
BLAZERS	42
COATS	48
ACCESSORIES	52
YELLOW BOW	56

THE BRAND J. HARVEST & FROST

The brand J. Harvest & Frost was created with passion as the driving force. Passion to create something really good at affordable prices. A natural target image was the knowledge to make really good products that we wanted to use ourselves. We wanted to combine well-designed and elaborate garments for workwear and leisure.

Inspiration came from many sources, such as U.S. advertising agencies, leaders of Norwegian oil business and Swedish merchants. A lot of inspiration from the earlier half of the 20th century. We've studied books, brands and designers sharing our passion for the subject, good at what we want to accomplish. They have all been under our magnifying glass and received a thorough examination.

J. Harvest & Frost has been formed through the collaboration between two brands – James Harvest Sportswear and Frost. James Harvest Sportswear with its roots in U.S. college fashion and a worldwide distribution and Frost with a heritage from the tailored, well-cut garments in a small scale. Two excellent foundations brought together in one concept.

The aim of this brand is to offer well-made, detailed and affordable products of the highest quality. Some details of our garments are only found on much more expensive products.

To succeed in our mission, we need to have the best tailors/seamstresses, the best materials, the best details, the best commitment and the best customers. Good enough is not a term that we use when it comes to our products. The best part is our ambition. Passion drives us.

In order to fulfil our ambition, we try to keep updated on available materials, the best stitches/techniques, what's happening in the industry and what we can do better.

Our goal is to give you the feeling of getting something extra when you come across a garment from J. Harvest & Frost. If your feeling is comparable to getting a very special gift we are near our goal. You shall be totally satisfied – that's it. End of story.

One challenge is still unsolved – the body shapes. Some are thin and some are strong. Some have long arms, and some have short. Our ambition is models for everyone. In most cases our garments fit from the start but for some body shapes garments need to be adjusted to fit perfectly.

J. Harvest & Frost is well-made, detailed and affordable.

In the brand J. Harvest & Frost you will find all our soul and all our heart.



PASSION



DEDICATION



HARD WORK



CURIOSITY



J. HARVEST & FROST

C O R P O R A T E S H I R T M A K E R



J.HARVEST&FROST/BLACK_BOW

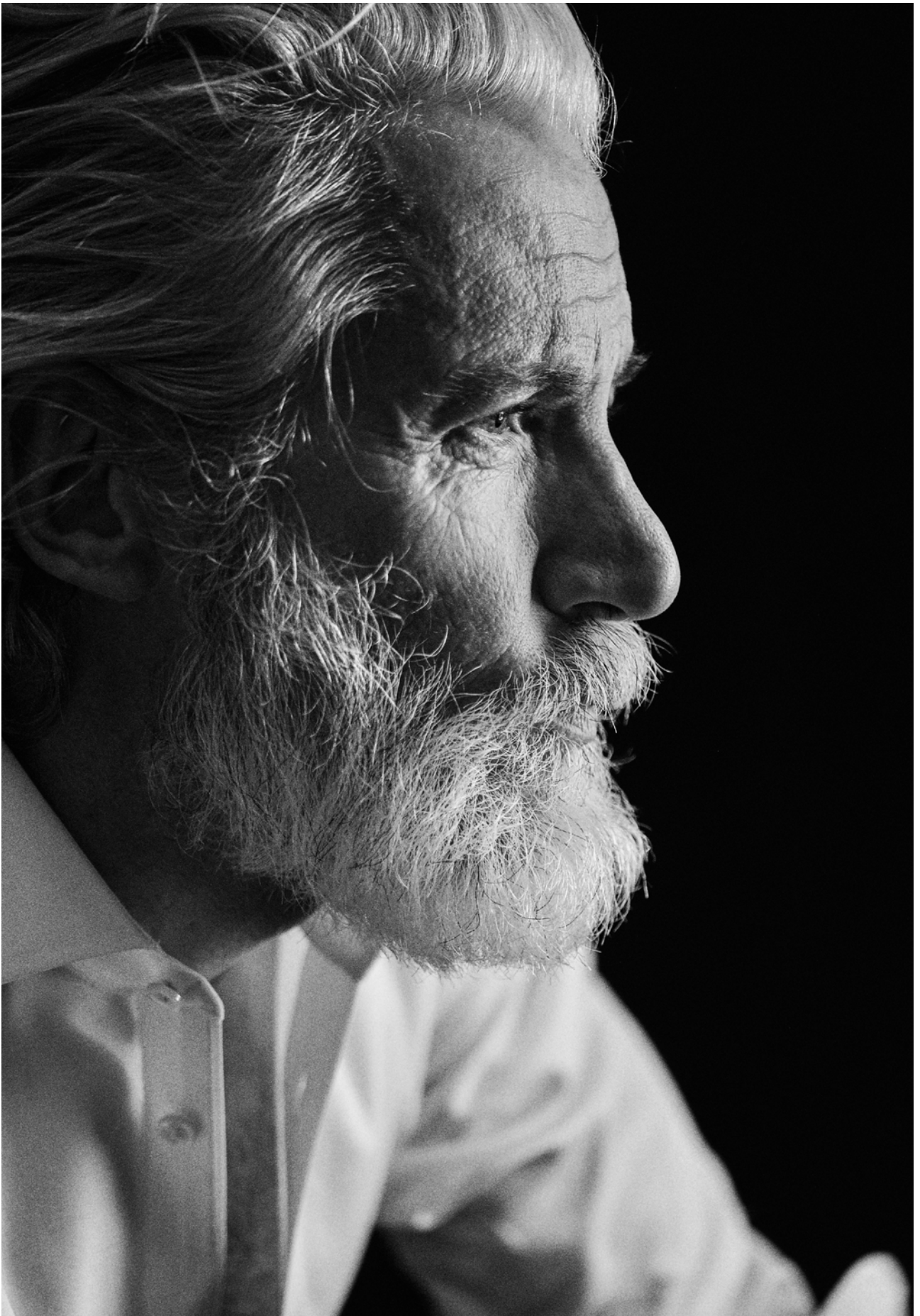


THE FULL FEATURED DRESS SHIRT

BLACK BOW

ANTI SPILL NANO TREATED
ELASTIC TOPBUTTON THREAD
MECHANICAL STRETCH
NEVER IRON TREATED
TAPED SEAMS
SPLIT YOKE







BLACK BOW 60
THE SUPERIOR CLASSIC

J.HARVEST & FROST

Black Bow 60

Black Bow is set out to be the world's best working shirt.

We created a modern multifunction shirt using only the finest luxurious cotton. It took us years of testing, failing and progressing. It is a challenge to combine all functions at this high-end quality fabric level.

BLACK
BOW

60



REGULAR
2906001
S-5XL



SLIM FIT
2906002
S-XXL



WOMAN
2906003
XS-4XL



100 WHITE



500 SKY BLUE

- BLACK BOW LINE.
- NEVER IRON.
- NANO TECHNOLOGY. WATER, OIL AND STAIN REPELLENT.
- SOLID COLOR. 100% LONG STAPLE COMPACT COTTON WITH MECHANICAL STRETCH. MACHINE WASHABLE.
- SPLIT BACK YOKE ENSURES SMOOTH CONTOURED SHOULDERS AND A GREATER RANGE OF MOTION.
- TAPED MAIN-SEAMS HELP THE SHIRT LOOK SHARP, WASH AFTER WASH. NO WRINKLES.

- MODERN CUT-AWAY COLLAR.
- ELASTIC TOP BUTTON THREAD.
- LONG SLEEVE. ROUND EDGE -CUFF. EXTRA BUTTONHOLE FOR CUFF LINKS.
- MATCHING HANDKERCHIEF MADE OF 100% LINEN (CUFF LINKS FOR WOMEN).
- CURVED HEM.

RECOMMENDED PRICE: 99,95 €



GREEN BOW 01
THE SOLID CLASSIC



REGULAR
2900101
S-5XL



SLIM FIT
2900102
S-XXL



WOMAN
2900103
XS-4XL

GREEN
BOW

01



560 MID BLUE



600 NAVY



100 WHITE



500 SKY BLUE



900 BLACK

Nothing beats the clean look of a solid dress shirt.

But even at a solid color there are still some features that make our shirt stand out from the crowd. The shirt is crafted in our favorite high performance twill texture. This gives the perfect sheen to it, results in a substantial good hand feeling and makes it less transparent than similar white dress shirts. A split yoke in back, medium cut-away collar and a 35 mm. raised placket set the edge for this sharp, but classic shirt.

We even added a free matching handkerchief for you, so you can go all the way this time.

- GREEN BOW LINE.
- MATCHING HANDKERCHIEF TO HELP YOU SET THE STANDARD.
- SOLID COLORS. 100% COTTON, MACHINE WASHABLE. NON-IRON PATENTED ENVIRONMENTAL TREATMENT. LONG STAPLE 2-PLY COMPACT COTTON FOR THE BEST POSSIBLE RESULT.
- SPLIT BACK YOKE ENSURES SMOOTH CONTOURED SHOULDERS, AND A GREATER RANGE OF MOTION.

- TAPED MAIN-SEAMS HELP THE SHIRT LOOK SHARP AND NEAT WASH AFTER WASH. NO WRINKLES.
- SEMI CUT-AWAY COLLAR.
- LONG SLEEVE. SINGLE ANGEL-CUFF, WITH EXTRA BUTTONHOLE FOR CUFF LINKS.
- TALL, 4 MM-THICK BUTTONS FOR A SUBSTANTIAL AND MODERN FEELING.
- CURVED HEM.

RECOMMENDED PRICE: **69,95 €**



RED BOW 20
THE SOLID WITH A TWIST



REGULAR
2902001
S-4XL



SLIM FIT
2902002
S-XXL



WOMAN
2902003
XS-4XL

RED
BOW

20



1066 WHITE/NAVY



109 WHITE/BLACK



5066 SKY BLUE/NAVY



605 NAVY/SKY BLUE



904 BLACK/RED

Through the Red bow line we reinvent the classic shirt. By adding sophisticated colors and details we made it more modern and smart, but still kept it a classy business shirt.

The shirt is crafted in our favorite high performance twill texture. This gives the perfect sheen to it, results in a substantial good hand feeling and makes it less transparent than similar dress shirts.

We even added a free matching handkerchief for you, so you can go all the way this time.

- RED BOW LINE.
- MATCHING HANDKERCHIEF TO HELP YOU SET THE STANDARD.
- SOLID COLOR. 100% COTTON, MACHINE WASHABLE. NON-IRON PATENTED ENVIRONMENTAL TREATMENT. LONG STAPLE 2-PLY COMPACT COTTON.
- SPLIT BACK YOKE ENSURES SMOOTH CONTOURED SHOULDERS, AND A GREATER RANGE OF MOTION.
- TAPED MAIN-SEAMS HELP THE SHIRT LOOK

SHARP AND NEAT WASH AFTER WASH. NO WRINKLES.

- SEMI CUT-AWAY COLLAR.
- LONG SLEEVE. SINGLE ANGEL-CUFF, WITH EXTRA BUTTONHOLE FOR CUFF LINKS.
- TALL, 4 MM-THICK BUTTONS FOR A SUBSTANTIAL, MODERN LOOK.
- CURVED HEM.

RECOMMENDED PRICE: 79,95 €



RED BOW 21
THE CHECKERED WITH A TWIST



REGULAR
2902101
S-4XL



SLIM FIT
2902102
S-XXL



WOMAN
2902103
XS-4XL

RED
BOW

21



601 NAVY CHECK



501 SKY BLUE CHECK

A light patterned shirt, perfect for the office. Checks on white background, combined with delicate contrast colors, make it a modern classic.

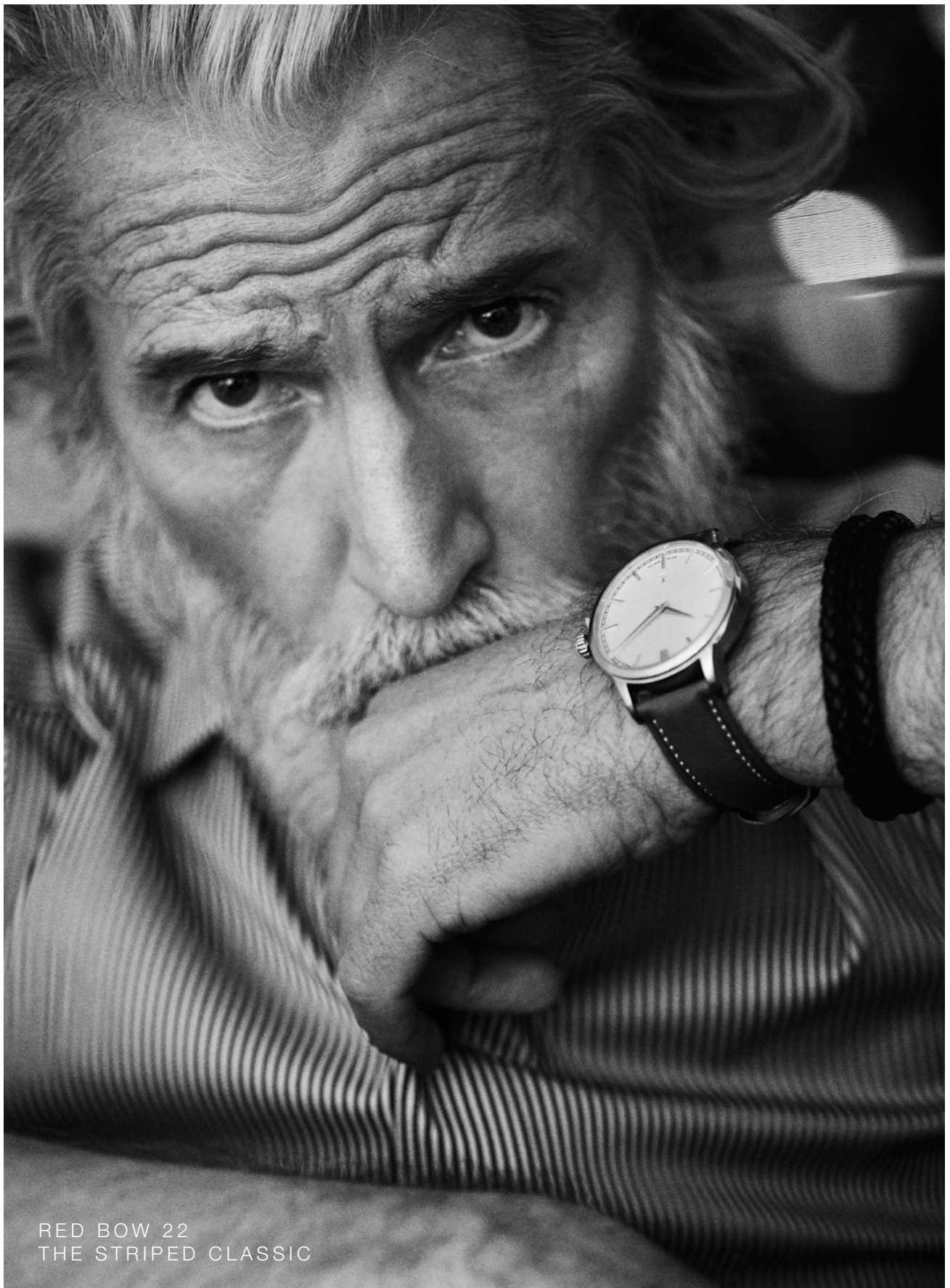
The shirt is crafted in our favorite high performance twill texture. This gives the perfect sheen to it, a nice look of texture and substantial good hand feeling. A semi cut-away collar, flat front placket and a split yoke at back, are just some other details making this fine shirt.

We even added a free matching handkerchief for you, so you can go all the way this time.

- RED BOW LINE.
- MATCHING HANDKERCHIEF TO HELP YOU SET THE STANDARD.
- CHECKED. 100% COTTON, MACHINE WASHABLE. NON-IRON PATENTED ENVIRONMENTAL TREATMENT. LONG STAPLE 2-PLY COMPACT COTTON FOR THE BEST POSSIBLE RESULT.
- SPLIT BACK YOKE ENSURES SMOOTH CONTOURED SHOULDERS, AND A GREATER RANGE OF MOTION.

- TAPED MAIN-SEAMS HELP THE SHIRT LOOK SHARP AND NEAT WASH AFTER WASH. NO WRINKLES.
- SEMI CUT-AWAY COLLAR.
- LONG SLEEVE. SINGLE ANGEL-CUFF, WITH EXTRA BUTTONHOLE FOR CUFF LINKS.
- TALL, 4 MM-THICK BUTTONS FOR A SUBSTANTIAL, MODERN LOOK.
- CURVED HEM.

RECOMMENDED PRICE: 79,95 €



RED BOW 22
THE STRIPED CLASSIC



REGULAR
2902201
S-4XL



SLIM FIT
2902202
S-XXL



WOMAN
2902203
XS-4XL

RED
BOW

22

501 SKY BLUE
STRIPE

601 NAVY
STRIPE

901 BLACK
STRIPE



The Bengal striped shirt will never go out of style; it's a never ending story.

Our model is crafted in the finest twill fabric, designed to bring out the vibrant rich colors of the stripes. Sophisticated contrast fabric, semi cut-away collar, flat front placket and a split yoke at back, are just some other details making it the stylish business classic it is.

We even added a free matching handkerchief for you, so you can go all the way this time.

- RED BOW LINE.
- MATCHING HANDKERCHIEF TO HELP YOU SET THE STANDARD.
- STRIPED. 100% COTTON, MACHINE WASHABLE. NON-IRON PATENTED ENVIRONMENTAL TREATMENT. LONG STAPLE 2-PLY COMPACT COTTON FOR THE BEST POSSIBLE RESULT.
- SPLIT BACK YOKE ENSURES SMOOTH CONTOURED SHOULDERS, AND A GREATER RANGE OF MOTION.
- TAPED MAIN-SEAMS HELP THE SHIRT LOOK SHARP AND NEAT WASH AFTER WASH. NO WRINKLES.
- SEMI CUT-AWAY COLLAR.
- LONG SLEEVE. SINGLE ANGEL-CUFF, WITH EXTRA BUTTONHOLE FOR CUFF LINKS.
- TALL, 4 MM-THICK BUTTONS FOR A SUBSTANTIAL, MODERN LOOK.
- CURVED HEM.

RECOMMENDED PRICE: 79,95 €



RED BOW 24
THE PINSTRIPED REBEL



REGULAR
2902401
S-4XL



SLIM FIT
2902402
S-XXL



WOMAN
2902403
XS-4XL

RED
BOW

24



951 GREY
STRIPE



551 MIDBLUE
STRIPE



White thin stripes on a blue or grey anthracite base, makes it a stylish new version of the classic striped shirt. The shirt can perfectly match with all colors and patterns, and is an excellent choice if you should add some colors to your standard white & skyblue wardrobe.

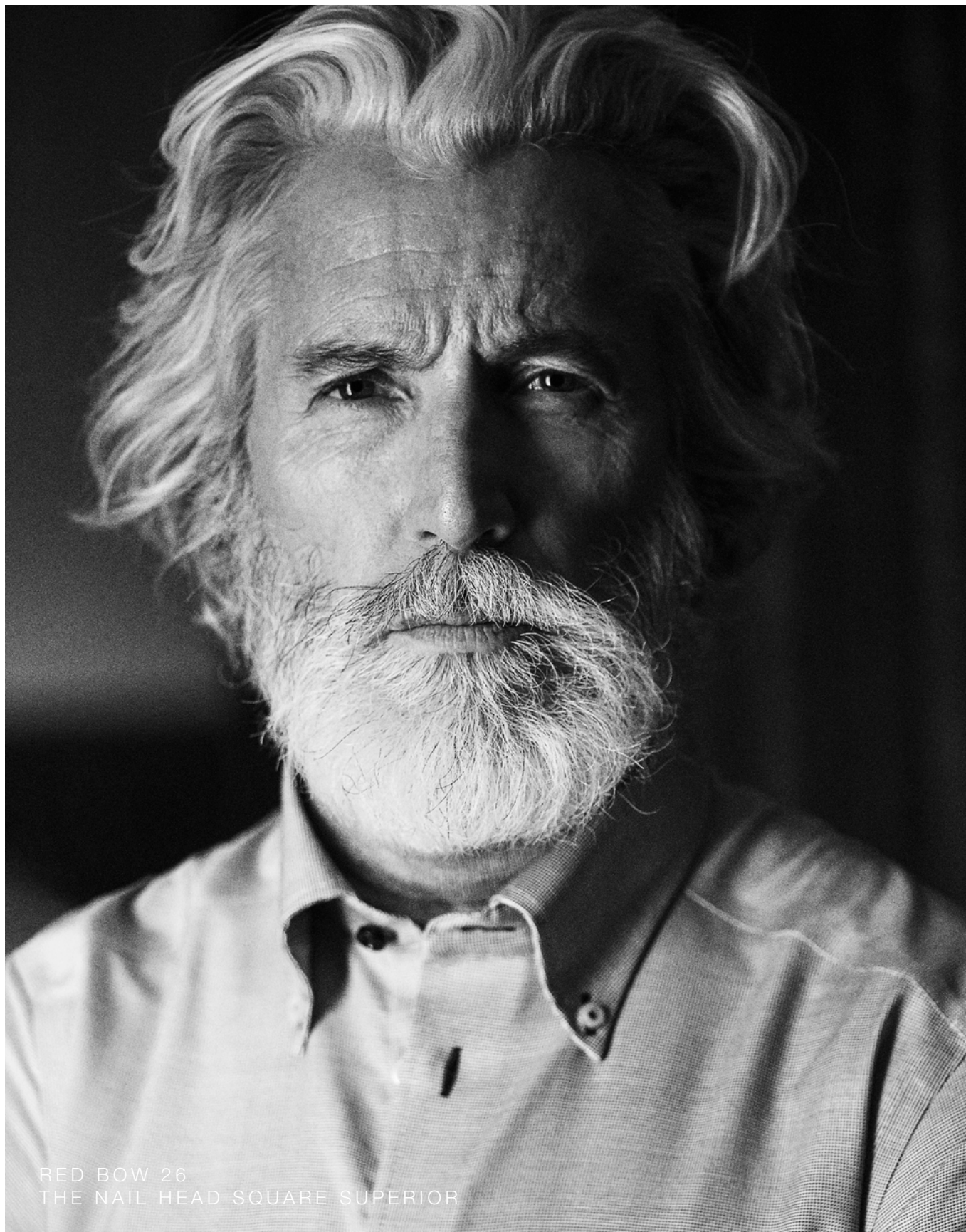
The shirt is crafted in a crisp and sharp poplin weave. Ideal for the fine striped pattern.

We added modern contrast details together with standard features like semi cut away collar, flat front, angle cuff and a split yoke in the back. The shirt is well-designed to take you from the office to the dinner party in one day.

- RED BOW LINE.
- MATCHING HANDKERCHIEF.
- STRIPED POPLIN WEAVE. 100% COTTON, MACHINE WASHABLE. NON-IRON PATENTED ENVIRONMENTAL TREATMENT. LONG STAPLE 2-PLY COMPACT COTTON FOR THE BEST POSSIBLE RESULT.
- SPLIT YOKE ENSURES SMOOTH CONTOURED SHOULDERS, AND A GREATER RANGE OF MOTION.

- TAPED MAIN-SEAMS HELP THE SHIRT LOOK SHARP AND NEAT WASH AFTER WASH. NO WRINKLES.
- SEMI CUT-AWAY COLLAR.
- LONG SLEEVE. SINGLE ANGEL-CUFF, WITH EXTRA BUTTONHOLE FOR CUFF LINKS.
- TALL, 4 MM-THICK BUTTONS GIVE A SUBSTANTIAL AND MODERN FEELING.
- FLAT FRONTPLACKET AND CURVED HEM

RECOMMENDED PRICE: 79,95 €



RED BOW 26
THE NAIL HEAD SQUARE SUPERIOR



REGULAR
2902601
S-4XL



SLIM FIT
2902602
S-XXL



WOMAN
2902603
XS-4XL

RED
BOW

26



506 SKY BLUE



605 NAVY

The incredible, luxurious fabric of this shirt is called »Pin Head Square Weave«. It is obvious that the person wearing this shirt, truly has style.

Our model is crafted in the finest fabric, designed to bring out the vibrant rich colors of the pattern. Sophisticated contrast fabric, soft button down collar, flat front placket and a split yoke at back, are just some other details making it the stylish statement that it is.

The included matching handkerchief (men) or the cuff links (women) helps you add the finishing touch.

- RED BOW LINE.
- MATCHING HANDKERCHIEF TO HELP YOU SET THE STANDARD.
- PIN HEAD SQUARE WEAVE. 100% COTTON, MACHINE WASHABLE. NON-IRON PATENTED ENVIRONMENTAL TREATMENT. LONG STAPLE 2-PLY COMPACT COTTON FOR THE BEST POSSIBLE RESULT.
- SPLIT BACK YOKE ENSURES SMOOTH CONTOURED SHOULDERS, AND A GREATER RANGE OF MOTION.
- TAPED MAIN-SEAMS HELP THE SHIRT LOOK

SHARP AND NEAT WASH AFTER WASH. NO WRINKLES.

- BUTTON DOWN COLLAR.
- LONG SLEEVE. SINGLE ANGEL-CUFF, WITH EXTRA BUTTONHOLE FOR CUFF LINKS.
- TALL, 4 MM-THICK BUTTONS FOR A SUBSTANTIAL, MODERN LOOK.
- CURVED HEM.

RECOMMENDED PRICE: **79,95 €**





REGULAR
2902801
S-4XL



SLIM FIT
2902802
S-XXL



WOMAN
2902803
XS-4XL

RED
BOW

28



560 SKYBLUE/NAVY CHECK



580 SKYBLUE/BROWN CHECK

Checked with two tone combinations, and a classic button down collar, this shirt is the essence of Relaxed Formal. The shirt is leisure at heart but dressed up with our fine twill non iron fabric, for perfect performance.

We added modern contrast details together with standard features like button down collar, flat front, angle cuff and a split yoke in the back. The shirt is well-designed either to enjoy as it is, or to aid you, making bold fashion decisions. As always with a crisp handkerchief or cuff links included.

- RED BOW LINE.
- MATCHING HANDKERCHIEF.
- TWO TONE CHECKS. 100% COTTON, MACHINE WASHABLE. NON-IRON PATENTED ENVIRONMENTAL TREATMENT. LONG STAPLE 2-PLY COMPACT COTTON FOR THE BEST POSSIBLE RESULT.
- SPLIT YOKE ENSURES SMOOTH CONTOURED SHOULDERS, AND A GREATER RANGE OF MOTION.

- TAPED MAIN-SEAMS HELP THE SHIRT LOOK SHARP AND NEAT WASH AFTER WASH. NO WRINKLES.
- BUTTON DOWN COLLAR.
- LONG SLEEVE. SINGLE ANGEL-CUFF, WITH EXTRA BUTTONHOLE FOR CUFF LINKS.
- TALL, 4 MM-THICK BUTTONS GIVE A SUBSTANTIAL AND MODERN FEELING.
- CURVED HEM

RECOMMENDED PRICE: 79,95 €

PURPLE
BOW

40



PURPLE BOW 40
THE TRENDY OXFORD



REGULAR
2904001
S-4XL



SLIM FIT
2904002
S-XXL



WOMAN
2904003
XS-4XL

PURPLE
BOW

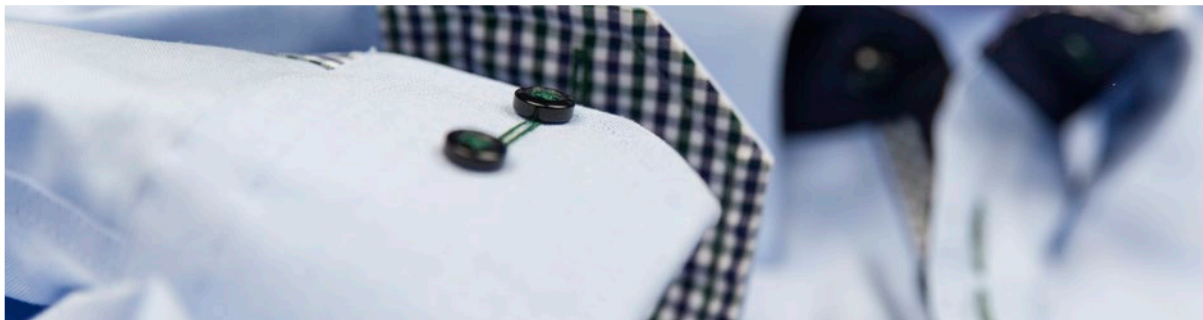
40



106 WHITE



506 SKY BLUE



A classic Oxford shirt is every wardrobe's essential. And our edition is lively detailed to make the most of it.

This sleek sport shirt features sophisticated contrast colors, soft button down collar, raised placket, split yoke in back and a stylish chest pocket. Team it up with a regimental tie, and get the perfect preppy college look.

- PURPLE BOW LINE.
- MATCHING HANDKERCHIEF TO HELP YOU SET THE STANDARD.
- SOLID. 100% COTTON, MACHINE WASHABLE. NON-IRON PATENTED ENVIRONMENTAL TREATMENT. LONG STAPLE 2-PLY COMPACT COTTON FOR THE BEST POSSIBLE RESULT.
- SPLIT BACK YOKE ENSURES SMOOTH CONTOURED SHOULDERS, AND A GREATER RANGE OF MOTION.
- SOFT BUTTON DOWN COLLAR, WITH A THIRD BUTTON AT THE BACK OF THE COLLAR.
- TAPED MAIN-SEAMS HELP THE SHIRT LOOK SHARP AND NEAT WASH AFTER WASH. NO WRINKLES.
- PIPED CHEST POCKET ON MENS STYLE.
- LONG SLEEVE. SINGLE ANGEL-CUFF, WITH EXTRA BUTTONHOLE FOR CUFF LINKS.
- ROUND CLASSIC BUTTONS FOR A SPORTY LOOK.
- RAISED PLACKET AND CURVED HEM

RECOMMENDED PRICE: **89,95 €**





REGULAR
2904101
S-4XL



SLIM FIT
2904102
S-XXL



WOMAN
2904103
XS-4XL

PURPLE
BOW

41



501 SKY BLUE
CHECK



601 NAVY
CHECK

A Gingham check shirt is a classic that every man should have in his rotation. Our modern version is crafted of finest twill texture, with taped main seams and non-iron patented treatment. With this shirt's impeccable performance it works perfectly at the office, as well as for sporty leisure.

Other features such as sophisticated contrast colors, soft button down collar, split yoke in back, and a stylish chest pocket help reinvent this old classic. You even get a free hanky to top it off.

- PURPLE BOW LINE.
- MATCHING HANDKERCHIEF TO HELP YOU SET THE STANDARD.
- GINGHAM CHECK. 100% COTTON, MACHINE WASHABLE. NON-IRON PATENTED ENVIRONMENTAL TREATMENT. LONG STAPLE 2-PLY COMPACT COTTON FOR THE BEST POSSIBLE RESULT.
- SPLIT BACK YOKE ENSURES SMOOTH CONTOURED SHOULDERS, AND A GREATER RANGE OF MOTION.
- TAPED MAIN-SEAMS HELP THE SHIRT LOOK

- SHARP AND NEAT WASH AFTER WASH. NO WRINKLES.
- SOFT BUTTON DOWN COLLAR, WITH A THIRD BUTTON AT THE BACK.
- PIPED CHEST POCKET ON MENS STYLE.
- LONG SLEEVE. SINGLE ANGEL-CUFF. EXTRA CUFF LINKS HOLE.
- TALL, 4 MM-THICK BUTTONS FOR A SUBSTANTIAL AND MODERN FEELING.
- CURVED HEM

RECOMMENDED PRICE: **89,95 €**





REGULAR
2904601
S-4XL



SLIM FIT
2904602
S-XXL



WOMAN
2904603
XS-4XL

PURPLE
BOW

46



106 WHITE



506 SKYBLUE

The micro-cord Bedford structure in solid colour gives the shirt class, the extreme cutaway collar makes it modern and the navy blue details and paisley pattern makes it a favorite. All within the spirit of our purple bow shirt line.

The shirt brings your mind to the Mediterranean and Italy, wear it with style. It truly is a power shirt.

- PURPLE BOW LINE.
- MATCHING HANDKERCHIEF.
- WHITE, MICRO-CORD BEDFORD STRUCTURE. 100% COTTON, MACHINE WASHABLE. NON-IRON PATENTED ENVIRONMENTAL TREATMENT. LONG STAPLE 2-PLY COMPACT COTTON FOR THE BEST POSSIBLE RESULT.
- SPLIT BACK YOKE ENSURES SMOOTH CONTOURED SHOULDERS, AND A GREATER RANGE OF MOTION.

- TAPED MAIN-SEAMS HELP THE SHIRT LOOK SHARP AND NEAT WASH AFTER WASH. NO WRINKLES.
- EXTREME CUT-AWAY COLLAR.
- LONG SLEEVE. SINGLE ANGEL-CUFF, WITH EXTRA BUTTONHOLE FOR CUFF LINKS.
- TALL, 4 MM-THICK BUTTONS GIVE A SUBSTANTIAL AND MODERN FEELING.
- CURVED HEM.

RECOMMENDED PRICE: **89,95 €**



INDIGO BOW

Our indigo bow line is all about washed and worn. It is the worker's shirt that is already worked in. Almost like it has been there for 100 year's already.

We take great inspiration in the iconic, original blue jeans. They changed the world of trouser. What started off as an idea to make a pair of working trousers that wouldn't fall apart, Is today a worldwide industry.

From it's birth, a sunny day in May 1873, it has become the most popular pant in modern time, and come in thousands of variations and brands.

But still when you turn to the subject jeans, Levi's is the brand that first comes to mind. The brand is still a world leader 150 years later.

Could you imagine a better inspiration, we bow our heads in admiration!

Like denim is for trousers, the washed Oxford is for shirts. It has become iconic. A uniform, part of every wardrobe and the shirt comes in all variations and all kinds of brands.

Our indigo bow is a tribute to the icon. Carefully chosen fabrics should give you the right feeling and it is of course made to endure more physical and demanding work environments. We did not invent the wheel, it is already there. But we are proud and humble to take part of the icon, and prepare it for the next generation.

Enjoy our Tribute to Leisure.



REGULAR
2903001
S-4XL



SLIM FIT
2903002
S-XXL



WOMAN
2903003
XS-4XL

INDIGO
BOW

30

900 BLACK



450 PINK



100 WHITE



500 SKY BLUE

Our indigo bow oxford shirt is crafted of carefully selected fabric and finishing that gives the right soft and worn feeling. It is a worker-shirt that is already »worked-in«.

- INDIGO BOW LINE.
- SOLID COLOR, 100 % COTTON. OXFORD WEAVE, DURABLE WASH- PEACHED SURFACE.
- WEIGHT 160 GRAM.
- MACHINE WASHABLE.
- SPLIT YOKE, ENSURES SMOOTH CONTOURED

SHOULDERS. AND A GREATER RANGE OF MOTION.

- BUTTON DOWN COLLAR.
- CHEST POCKET ON MENS STYLE.
- LONG SLEEVE.
- ROUND EDGE BARREL CUFF.
- NATURAL WHITE BUTTONS.

RECOMMENDED PRICE: **69,95 €**

INDIGO
BOW

31



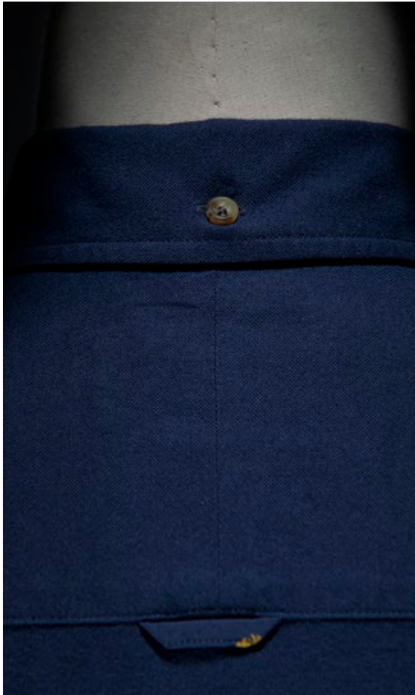
REGULAR
2903101
S-4XL



SLIM FIT
2903102
S-XXL



WOMAN
2903103
XS-4XL



605 NAVY

Our classic heavy oxford reveals itself in this deep rich indigo blue color, combined with brown horn buttons.

The 40/1 x 20/2 construction gives it the right amount of beefiness; and we already soften it up for you. The more you wear it, the more personality the shirt will have.

- INDIGO BOW LINE.
- SOLID COLOR, 100 % COTTON. OXFORD WEAVE, DURABLE WASH- PEACHED SURFACE.
- WEIGHT 160 GRAM.
- MACHINE WASHABLE.
- SPLIT YOKE, ENSURES SMOOTH CONTOURED

- SHOULDERS. AND A GREATER RANGE OF MOTION.
- BUTTON DOWN COLLAR.
- CHEST POCKET ON MENS STYLE.
- LONG SLEEVE.
- ROUND EDGE BARREL CUFF.
- BROWN HORN BUTTONS.

RECOMMENDED PRICE: **69,95 €**



REGULAR
2903201
S-4XL



SLIM FIT
2903202
S-XXL



WOMAN
2903203
XS-4XL

INDIGO
BOW

32



501 SKYBLUE STRIPE

The blue and white university stripe oxford is as iconic as it gets – kind of preppy and old school, yet forever in style. A typical oxford that works well dressed up or down.

- INDIGO BOW LINE.
- CLASSIC STRIPED PATTERN, 100 % COTTON. OXFORD WEAVE, DURABLE WASH- PEACHED SURFACE.
- WEIGHT 160 GRAM.
- MACHINE WASHABLE.
- SPLIT YOKE, ENSURES SMOOTH CONTOURED SHOULDERS. AND A GREATER RANGE OF

- MOTION.
- BUTTON DOWN COLLAR.
- CHEST POCKET ON MENS STYLE.
- LONG SLEEVE.
- ROUND EDGE BARREL CUFF.
- NATURAL WHITE BUTTONS.

RECOMMENDED PRICE: 69,95 €







J.HARVEST & FROST

**CLASSIC
BLAZER**

MAN
2960001
46-62



WOMAN
2960003
32-48

Classic blazer in a 280 gram smooth fabric. The material is carefully chosen. A mix of 70% wool, 27% polyester and 3% stretch, sets the blazer up to be a perfect working blazer. Stretch for your comfort and the blended quality for less wrinkles. Fold it gently into your suitcase and it is ready to wear when you arrive. Again, no wrinkles.

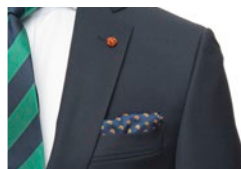
The blazer has nice and stylish color contrasts at the right spots. Show them or keep it as the modern classic it is. We call it the classic with a twist.

Other powerful features are; colorful interior, horn buttons, kissing buttons at sleeve (only for men), Turn up interior in the chest pocket to use as handkerchief.

- 70% WOOL, 27 % POLYESTER + 3 % STRETCH. 280 GRAM FABRIC.
- TURN UP INTERIOR INSIDE CHEST POCKET TO USE AS HANDKERCHIEF.
- TWO-BUTTON CLOSURE.
- DOUBLE VENTED BACK HEM FOR MAN BLAZER – NO VENTS FOR WOMAN BLAZER.
- WELT POCKET AT CHEST AND 2 WELTPOCKETS WITH FLAPS IN WAIST.

- SLEEVES WITH 4 KISSING BUTTONS + CONTRASTING THREAD AT THE 4TH BUTTON (ONLY MAN).
- CONTRAST FELT+TIE FABRIC BACK OF LAPEL.
- REGULAR FIT (BETWEEN SLIM AND REGULAR) FOR BOTH MAN & WOMAN.
- FULLY LINED. SOLID LINING IN BODY + CHECKED LINING IN SLEEVE.
- 4 INSIDE POCKETS (ONLY MAN).

RECOMMENDED PRICE: **224,95 €**



600 NAVY



980 DARK GREY



900 BLACK



J.HARVEST & FROST

CLUB BLAZER



MAN
2961001
46-62



WOMAN
2961003
32-48



Navy blazer in a 380 grams heavy structured fabric. The material is carefully chosen. A mix of 70% wool, 27% polyester & 3% stretch, sets the blazer up to be a perfect working blazer. Stretch for your comfort and the mixed quality for less wrinkles. Fold it gently into your suitcase and it is ready to wear when you arrive. Again, no wrinkles.

The blazer has nice and stylish color contrasts at the right spots. Show them or keep it as the modern classic it is. We call it the classic with a twist.

Other powerful features are; colorful interior, AMF stitching and horn buttons. The gentlemen also get kissing buttons at sleeves, free handkerchief and a matching button in placket, while the ladies hold their own with a micro bowtie brouche.

- 70% WOOL, 27 % POLYESTER + 3 % STRETCH. 380 GR/M² FABRIC.
- COLOR. NAVY BLUE.
- TWO- BUTTON CLOSURE.
- DOUBLE VENTED BACK HEM FOR MAN BLAZER- NO VENTS FOR WOMAN BLAZER.
- TWO PATCH POCKETS IN WAIST, AND PATCH CHEST POCKET.
- AMF STITCHING AT SHOULDER, LAPEL AND POCKETS.
- SLEEVES WITH 4 KISSING BUTTONS WITH RED CONTRASTING THREAD AT THE 4TH BUTTON (MAN).

- CONTRAST FELT+ TIE FABRIC AT BACK OF LAPEL.
- REGULAR FIT. (BETWEEN SLIM AND REGULAR.) FOR BOTH MAN & WOMAN.
- FULLY LINED. NAVY CHECK LINING IN BODY + SOLID COLOR NAVY LINING IN SLEEVE.
- 4 INSIDE POCKETS (MAN).
- HANDKERCHIEF IN CHEST FOR MEN BLAZER & MICRO BOWTIE-BROCHE IN LAPEL FOR WOMAN.

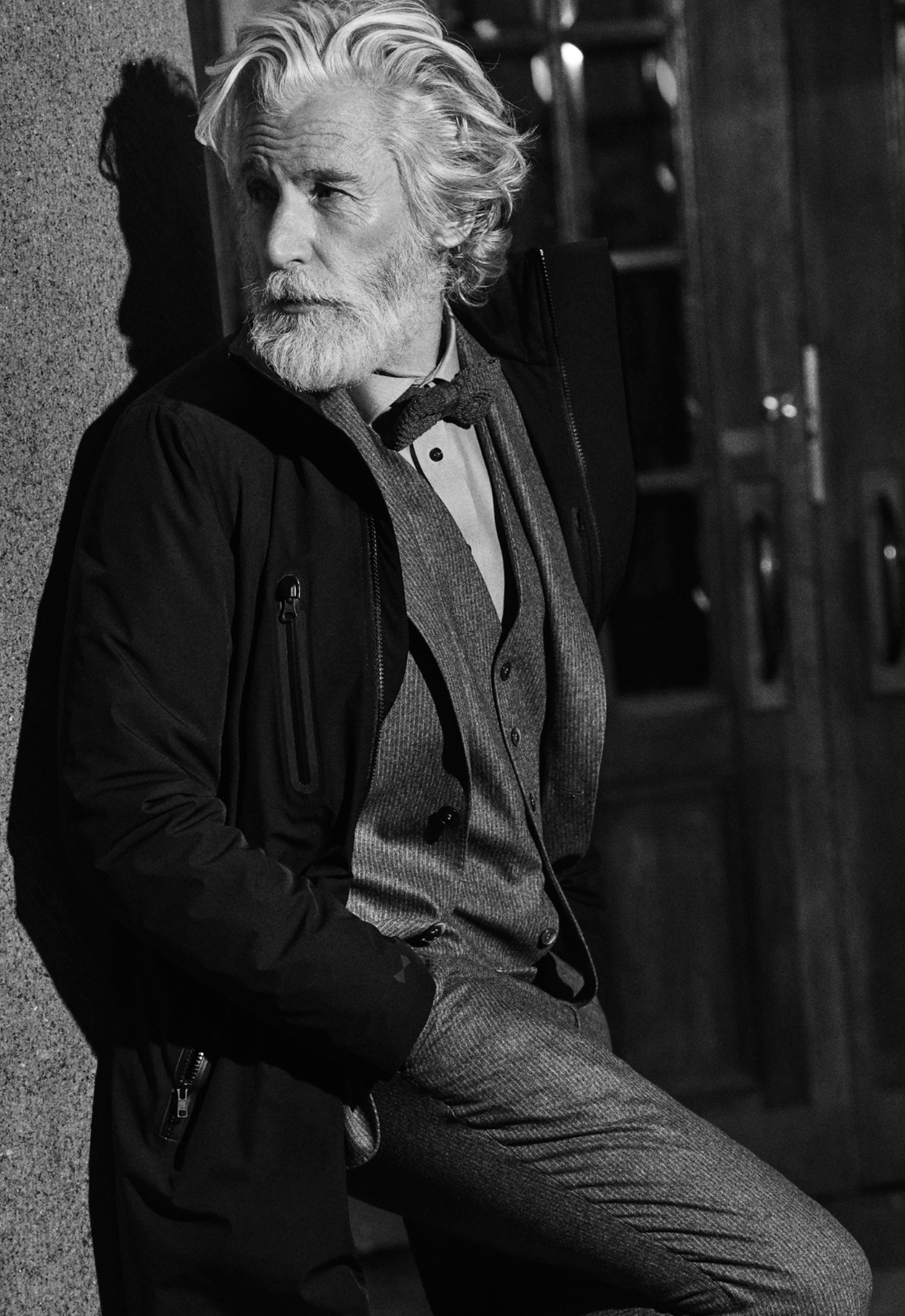
RECOMMENDED PRICE: **224,95 €**



600 NAVY







J.HARVEST & FROST

TECHNICAL CITY COAT



MAN
2990001
S-XXXXL



WOMAN
2990003
XS-XXL

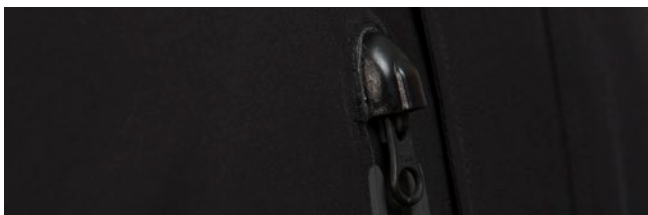
This is an exceptional light, comfortable and nice fitted $\frac{3}{4}$ length city-jacket. Suits any situation or weather condition, either it is on the way to a business meeting, or a late night stroll in the park.

The main Technical features are 360 degree stretch, thin Primaloft-Silver insulation, water and wind proof. This highly technical, extreme lightweight car-coat is perfect for usage in the -5°C To +15°C temperature range.

- BLACK COLOR
- EXCEPTIONAL LIGHTWEIGHT 600G.
- OUTERSHELL - 87% POLYAMIDE- 13% ELESTAN.
- 360 DEGREE STRETCH
- INSULATION- PRIMALOFT SILVER- 60 G.
- 10 000 MM. WATER PROOFED.
- 10 000 G. BREATHABILITY.
- DWR COATED WATER REPELLENCY.

- TWO WAY YKK ZIPPER IN FRONT PLACKET.
- WATER PROOF YKK ZIPPERS AT SIDES + CHEST POCKET.
- REFLECTIVE VISIBILITY DETAILS AT FRONT AND BACK FOR SAFETY.
- MAGNET LOCKING AT PLACKET, SPLIT & INSIDE POCKET.

RECOMMENDED PRICE: **299,95 €**





J.HARVEST & FROST

HYBRID WOOL COAT



MAN
2990101
S-XXXL



WOMAN
2990103
XS-XXL



We call it the Hybrid, as it is a mix of a typical A a classical wool coat and a zipped up technical jacket. We were inspired to create something different yet elegant, that had our name on it.

It has a modern stand collar, concealed front closure, chest pocket and impeccable stitching.

Well-fitted with a $\frac{3}{4}$ length, Perfect to be worn for work over a formal jacket but still a nice length for your everyday leisure adventures.

- 60%WOOL, 25%POLYESTER, 10%VISCOSE, 5%LYCRA.
- COLOR -BLACK
- HIDDEN TWO WAY YKK ZIPPER IN FRONT PLACKET.
- WATER PROOF YKK ZIPPERS IN SIDE+ CHEST POCKET.
- MAGNET CLOSING IN TOP COLLAR+ BACK SPLIT.
- REFLECTIVE VISIBILITY DETAILS AT FRONT AND BACK FOR SAFETY

RECOMMENDED PRICE: **299,95 €**





J. HARVEST & FROST

DOCUMENT FOLDER

Document folder with a stylish combination of leather and felt. Our beloved J. Harvest & Frost logo are embossed nicely in the leather in the front, between 2 leather straps. They are for the convenience open, so you can place your daily newspaper there when on the run.

The inside of the folder has lining in felt and multiple open pockets. It also shows some nice contrast color of royal blue felt behind the pocket, to give it a the extra twist.

- LEATHER HANDLE AT TOP
- METAL ZIPPER WITH LEATHER ZIP PULLER.
- MULTIPLE UTILITY POCKETS
- IPAD DEPARTMENT.
- BUSINESS CARD HOLDER.
- SIZE: 36 X 27 X 6CM. VOLUME: 3.5 L.

J. HARVEST & FROST

BRIEFCASE

This full leather briefcase is designed with multiple utility pockets and an adjustable leather shoulder strap. Our beloved J. Harvest & Frost logo are embossed in front.

Distinguished features like open straps in side for newspaper or umbrella, and a removable organizer made of braided elastic bands for all your gadgets. The inside is made with lining in grey felt, computer department, and a zip pocket at the side with contrast color felt as a nice colorful detail.

- TWO LEATHER TOP HANDLES AND DETACHABLE LEATHER SHOULDER STRAP.
- LEATHER PROPRIETOR TAG.
- OPEN STRAPS IN SIDES FOR NEWSPAPER OR UMBRELLA.
- FEATURE METALLIC ZIPS WITH LEATHER ZIP PULLERS
- REMOVABLE GADGET ORGANIZER – BRAIDED ELASTIC BANDS.
- POCKET FOR LAPTOP & ZIPPER POCKET IN SIDE.
- SIZE: 41.5 X 29.5 X 9CM. VOLUME: 9.5L.

J. HARVEST & FROST

WEEKEND BAG

Your perfect travel companion crafted of durable high density cotton canvas combined with details in soft luxury leather. Other nice Features as metal zip fastening at top and detachable shoulder strap. A practical Shoe department with zipper at the side. Brushed silver finish on metal trims. Inside bag is covered in soft striped fabric. Zipped interior pocket with stylish contrasting colored felt.

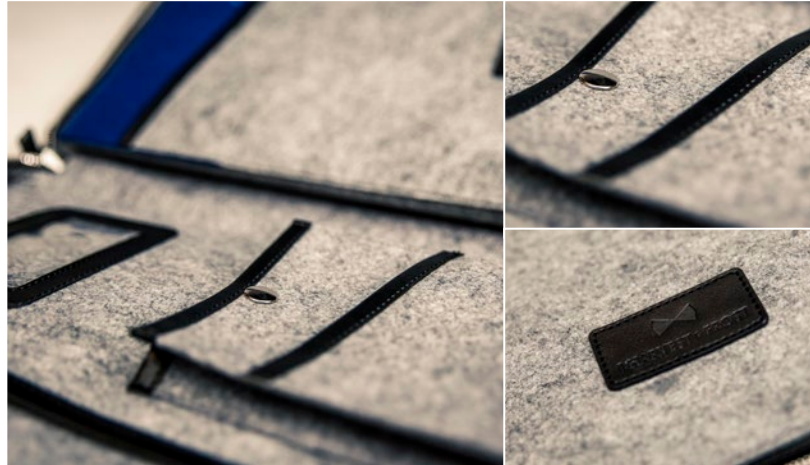
- GREY CANVAS WITH BLACK LEATHER DETAILS AND TWO LEATHER TOP HANDLES.
- REMOVABLE NYLON SHOULDER STRAP WITH LEATHER DETAILS.
- ZIPPED POCKETS AT OUTSIDE. 1 SHOE DEPARTMENT AND 1 POCKET IN SIDES.
- METALLIC ZIPS WITH LEATHER ZIP PULLERS
- LEATHER PROPRIETOR TAG.
- INTERIOR IS LINED WITH 100% POLY. ZIP POCKET AT THE SIDE WALL IS LINED WITH ROYAL BLUE FELT.
- SHELL: 100 % COTTON CANVAS, HIGH DENSITY 20 OZ. HANDLES, DECORATION STRAPS, REINFORCED CORNERS: 100% LEATHER.
- SIZE: L58.5 X W30.5 X H29CM. VOLUME: 46L.

DOCUMENT
FOLDER
2950200
ONE SIZE

900 BLACK



RECOMMENDED PRICE: **114,95 €**



BRIEFCASE
2950100
ONE SIZE

900 BLACK



RECOMMENDED PRICE: **224,95 €**



WEEKEND BAG
2950000
ONE SIZE

980 GREY



RECOMMENDED PRICE: **224,95 €**



**SOCKS SOLID**

2970101

51% MERINO WOOL,
48% POLYAMID, 1% LYCRA
SIZES: 34-36, 37-39, 40-42,
43-45, 46-48

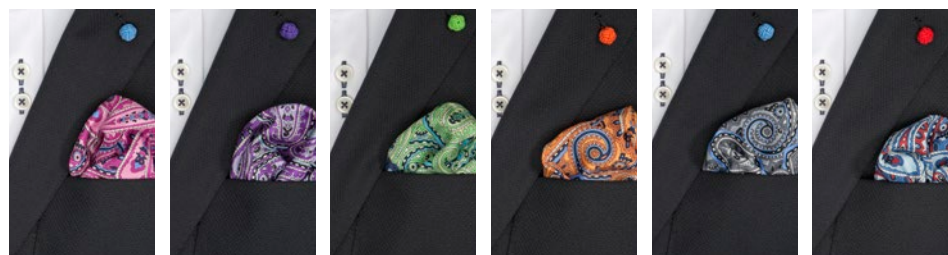
These Merino Wool socks have elastic knitting at the ankle and arch for a perfect fit all day.

RECOMMENDED PRICE: **11,95 €****THE PAISLEY HANDKERCHIEF**

2920300

100% SILK

This handsome pocket squares features a bold paisley pattern with rich colors.



488 PINK

888 PURPLE

788 GREEN

388 ORANGE

988 GREY

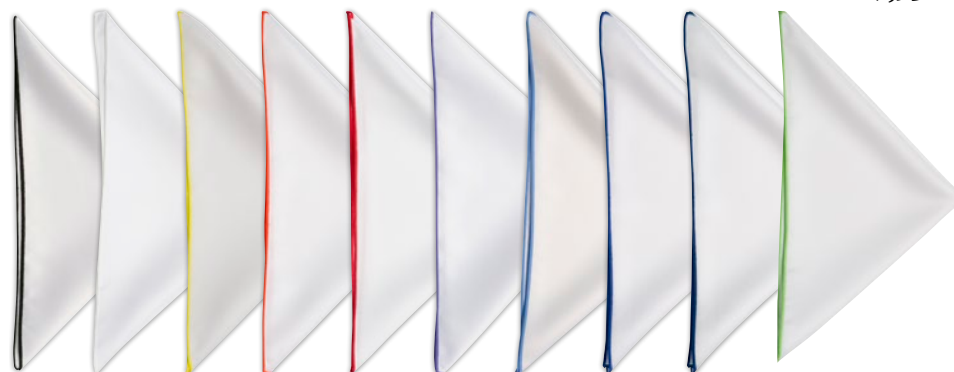
588 BLUE

RECOMMENDED PRICE: **7,95 €****THE WHITE HANDKERCHIEF**

2920100

100% MICROFIBER

We made this clean white handkerchiefs in a big variety of edge-colors. Feel free to match it up with our classic double knot cuff links to suit your occasion with style.



109 BLACK

100 WHITE

102 YELLOW

103 ORANGE

104 RED

118 PURPLE

105 LIGHT BLUE

115 BLUE

106 NAVY

107 GREEN

RECOMMENDED PRICE: **4,95 €****TIE BARS**

2940100

We made a selection of 6 colorful tie bars, to complete your smart look.

These colorful accessories not only ensure that you look stylish, but it also makes sure that your tie stays in place. Lift the tie up a tad above the bar, and it ensures an elegant tie draping. RECOMMENDED PRICE: **39,95 €**

**CUFF LINKS**

2940000

All of our shirts come with an extra buttonhole in the cuff, so if you prefer you can wear a set of our classic double knot on bar cuff links. They are hand-made from soft stretch band, and comes in a big variety of colors.

RECOMMENDED PRICE: **2,65 €**

BOWTIE

2930000

100 % MICROFIBER.

This Bow is self-tied. It is expertly made for the perfect proportions. You can adjust it easily after your neck size

RECOMMENDED
PRICE: **9.95 €**

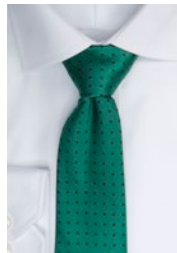
**TIES.**

100% MICROFIBER.

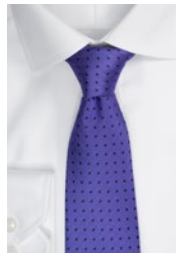
All of our ties are carefully crafted of the best interlining to ensure a firm touch and a perfect knot to the tie. We choose to make these ties in microfiber, as we had in mind that it is for hardworking people, and that the use can be a little bit rougher than normal fine dining. Microfiber has the ability to look like luxury natural silk and work like strong artificial fiber.

TIE DOTTED

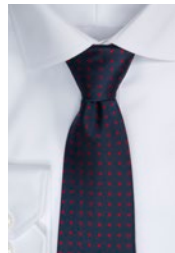
2910100



706 GREEN/NAVY



806 PURPLE/NAVY



604 NAVY/RED



901 BLACK/WHITE



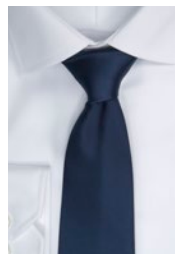
301 WINE/WHITE



700 GREEN



800 PURPLE



600 NAVY



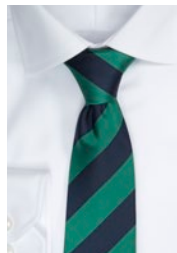
900 BLACK



300 WINE

TIE SOLID COLOR

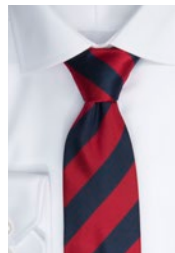
2910000



607 NAVY/GREEN



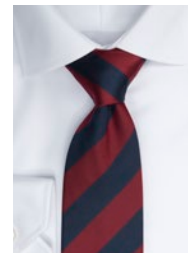
608 NAVY/PURPLE



604 NAVY/RED



602 NAVY/BROWN



603 NAVY/WINE

TIE REGIMENTAL STRIPE

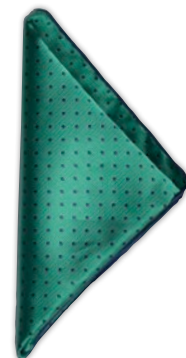
2910200

POCKET SQAURE

2920000

100% MICROFIBER.

A perfect selection of colors to mix and match with all of our fine ties. Classical dots mixes perfectly with all patterns. There is a lot of ways to fold the hanky, take a look at our hanky-helper which comes along, for some of them.



706 GREEN/NAVY



806 PURPLE/NAVY



604 NAVY/RED



901 BLACK/WHITE



301 WINE/WHITE

RECOMMENDED PRICE: **11.95 €**RECOMMENDED PRICE: **4.95 €**

J. HARVEST & FROST

YELLOW BOW

The best
bartending
cab driving
traveling shirt.
working
waitering
studying



These shirts are made for workin'

We knew we had to prioritize and make some hard choices. Some things were essential; the performance, style, taped seams, split yoke and the tall buttons: We had to keep the great cut from our existing shirts. Other features could be tweaked.

The material was changed to a fine, blended cotton polyester twill with a nice hand feel and a superb, patented environmental easy iron performance. We added the short sleeve option and corporate colours in the palette. Let us present you with a high performance shirt that takes you to work and back home with style. In our opinion the world's best middle price range shirt for the workplace.

Enjoy your hard work.▶◀



YELLOW BOW 50
LONG SLEEVE
REGULAR FIT
S-4XL
2905001

YELLOW BOW 50
LONG SLEEVE
SLIM FIT
S-XXL
2905002

YELLOW BOW 50
LONG SLEEVE
WOMAN
XS-4XL
2905003

YELLOW BOW 50
SHORT SLEEVE
REGULAR FIT
S-4XL
2905011

YELLOW BOW 50
SHORT SLEEVE
SLIM FIT
S-XXL
2905022

YELLOW BOW 50

Yellow bow is our roll-up-your-sleeves-and-get-to-work shirts. It's a solid colored classical shirt with modern tailored details. This high performance shirt is made in in our favorite fine blended twill with an added unique Easy Care treatment. Enjoy your hard work.



100 WHITE

500 SKY BLUE

600 NAVY

900 BLACK

- YELLOW BOW LINE.
- FABRIC- ØKOTEX 100 CERTIFIED. SOLID COLOR, 60% COTTON / 40% POLYESTER FINE TWILL FABRIC. MACHINE WASHABLE.
- SPECIAL ENVIRONMENTAL EASYCARE TREATMENT.
A Unique finishing that gives the fabric
 - HIGH WRINKLE FREE RATING.
 - LUXORIOUS AND SOFT HANDFEELING.
 - QUICK DRY .
- SPLIT BACK YOKE ENSURES SMOOTH CONTOURED SHOULDERS, AND A GREATER RANGE OF MOTION.
- TAPED MAIN-SEAMS HELP THE SHIRT LOOK SHARP AND NEAT WASH AFTER WASH. NO WRINKLES.
- SEMI CUT-AWAY COLLAR.
- LONG SLEEVE. SINGLE ANGEL-CUFF, WITH EXTRA BUTTONHOLE FOR CUFF LINKS. / SHORT SLEEVE OPTION.
- TALL, 4 MM-THICK BUTTONS FOR A SUBSTANTIAL AND MODERN FEELING.
- CURVED HEM.

RECOMMENDED PRICE: **39,95 €**





YELLOW BOW 51
REGULAR FIT
S-4XL
2905101

YELLOW BOW 51
SLIM FIT
S-XXL
2905102

YELLOW BOW 51
WOMAN
XS-4XL
2905103

YELLOW BOW 51

Yellow bow is our roll-up-your-sleeves-and-get-working shirts. It's a solid colored shirt with modern trimmings & tailored details. This high performance shirt is made in in our favorite fine blended twill with an added unique Easy Care treatment. Enjoy your hard work.



105 WHITE / SKY BLUE

505 SKY BLUE / NAVY

555 ROYAL/NAVY

955 GREY/BLACK

905 BLACK



- YELLOW BOW LINE.
- FABRIC- ØKOTEX 100 CERTIFIED. SOLID COLOR, 60% COTTON / 40% POLYESTER FINE TWILL FABRIC. MACHINE WASHABLE.
- SPECIAL ENVIRONMENTAL EASYCARE TREATMENT.
A Unique finishing that gives the fabric
 - HIGH WRINKLE FREE RATING.
 - LUXURIUS AND SOFT HANDFEELING.
 - QUICK DRY.
- SPLIT BACK YOKE ENSURES SMOOTH CONTOURED SHOULDERS, AND A GREATER RANGE OF MOTION.
- TAPED MAIN-SEAMS HELP THE SHIRT LOOK SHARP AND NEAT WASH AFTER WASH. NO WRINKLES.
- SEMI CUT-AWAY COLLAR.
- LONG SLEEVE. SINGLE ANGEL-CUFF, WITH EXTRA BUTTONHOLE FOR CUFF LINKS.
- TALL, 4 MM-THICK BUTTONS FOR A SUBSTANTIAL AND MODERN FEELING.
- CURVED HEM.

RECOMMENDED PRICE: **49,95 €**



COMMON COTTON
SINGLE YARN 70'
WITHOUT TAPED
SEAMS

J. HARVEST & FR
CORPORATE SHIRTN

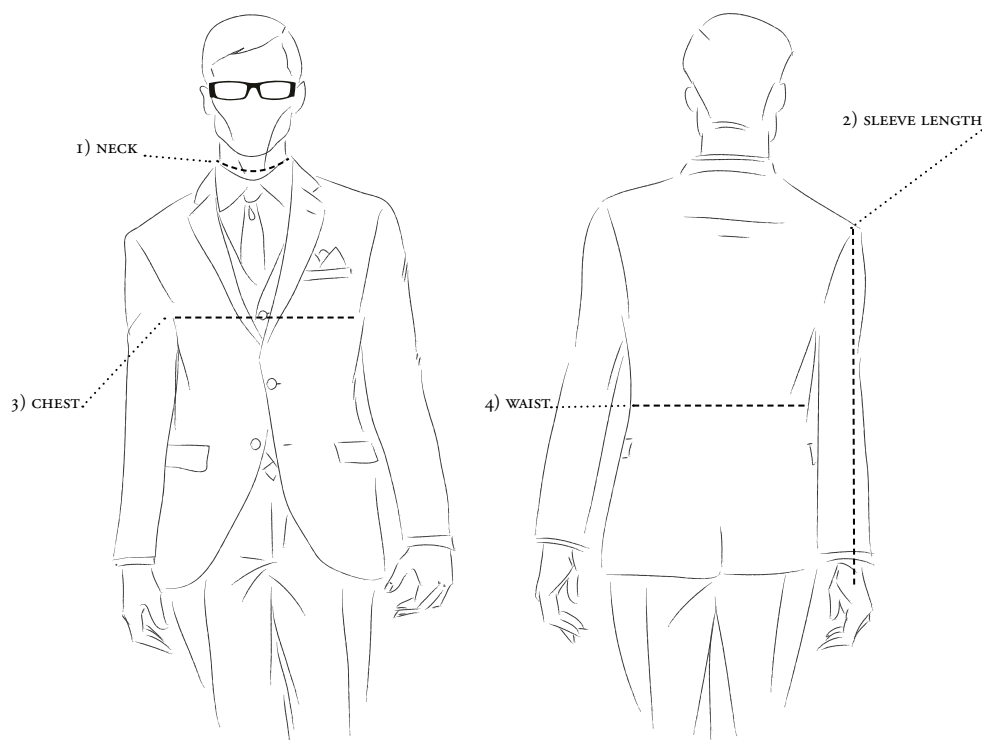




J.H & F NON-IRON
SUPERCOTTON
WITH TAPED
SEAMS

J.H&F Non-Iron Supercotton.

We are really proud of our shirts, and we want to show how great these garments really are. So we made this shirt. On your right is our J.H&F Non-Iron Supercotton with taped seams, the left half is common cotton single yarn 70' without taped seams. We washed it. Hang dried it and folded it neatly. We did not iron any parts of the shirt. As you can tell there is quite some difference. Notice the overall smoothness and pay extra attention to the shoulder seams. The regular fabric is not of poor quality. It's just not... Supercotton.



HOW TO MEASURE YOUR BODY

1) NECK

Place the measuring tape around the neck at the height where the collar would normally rest. This will be just below your Adam's apple. Stand relaxed. Do not crane your neck out or squeeze your chin down. The tape should be resting lightly on the skin, not squeezing it. Hold one finger under the tape measure to ensure some room for comfort.

2) SLEEVE LENGTH

Place one end of the measuring tape at the tip of the shoulder, where you imagine the shoulder seam of the shirt will be. Let your arm hang down at side, and run the measure tape along with it. Measure to the center of the meaty part of your palm. If you don't have a partner, measure a shirt with sleeves that is the right length.

3) CHEST

Run the measuring tape around the fullest part of your chest, tight up under your armpits and over the shoulder blades. Let your arms hang down in a relaxed, natural pose. Do not puff out your chest or arch your back in any sort of pose that isn't natural or sustainable.

4) WAIST

Run the tape around the fullest part of the belly. This is usually around the level of the belly button. The measuring tape should be snug on the skin, but not squeezing in. Let your arms hang down, and stand in a relaxed, natural pose. Do not puff out your stomach or try holding it in.

SIZE MAP

S H I R T S															
REGULAR	S	M	L	XL	XXL	XXXL	4XL	5XL	SLIM	S	M	L	XL	XXL	WOMAN
SIZE	37/38	39/40	41/42	43/44	45/46	47/48	49/50	51/52	SIZE	37/38	39/40	41/42	43/44	45/46	SIZE
NECK	38	40	42	44	46	48	50	52	NECK	38	40	42	44	46	NECK
CHEST	106	112	118	124	130	138	146	154	CHEST	100	106	112	118	124	CHEST
WAIST	102	108	114	120	126	134	142	150	WAIST	92	98	104	110	116	WAIST
BACK C. LENGTH*	79	80,5	82	83,5	84	86	88	90	BACK C. LENGTH*	78	79,5	81	82,5	83	BACK C. LENGTH
SLEEVE-LENGTH	67	68	69	70	70	71	71	71	SLEEVE-LENGTH	67	68	69	70	70	SLEEVE-LENGTH
* 1,5cm shorter B.C Length for Indigo Bow									* 1,5cm shorter B.C Length for Indigo Bow						

CONVERTER

CENTIMETER	NECK	38	40	42	44	46	48	50	52
SIZE	S	M	L	XL	XXL	XXXL	XXXXL	XXXXXL	
SIZE	37/38	39/40	41/42	43/44	45/46	47/48	49/50	51/52	
INCHES	15	15-3/4	16-1/2	17-1/2	18	19	19-3/4	20-1/2	

B L A Z E R S									
MAN	46	48	50	52	54	56	58	60	62
CHEST	104	108	112	116	120	124	130	138	146
MID WAIST	92	96	100	104	108,5	113	121	131	141
BACK C. LENGTH	71,5	73,5	75,5	77,5	79,5	80,5	81	81,5	82
SLEEVE LENGTH	63	64,5	65,5	66,5	67,5	68	68	68,5	68,5



WOMAN	32	34	36	38	40	42	44	46	48
CHEST	82	86	90	94	98	102	107	112	118
MID WAIST	73	77	81	85	89	93	98	103	109
BACK C. LENGTH	58	59	60	61	62	63	64	64,5	65
SLEEVE LENGTH	59	60	61	62	63	64	65	65,5	65,5

PRICES ARE VALID TO 01/01/2019, BUT THESE PRICES ARE SUBJECT TO UNILATERAL INCREASES THROUGHOUT THE YEAR (RISING COTTON PRICES, USD/EUR, ETC...). PRICES ARE SUBJECT TO PRINT ERRORS AND FINAL SALE. VAT AND SHIPPING NOT INCLUDED.





J. HARVEST & FROST

C O R P O R A T E S H I R T M A K E R

www.jharvestandfrost.com